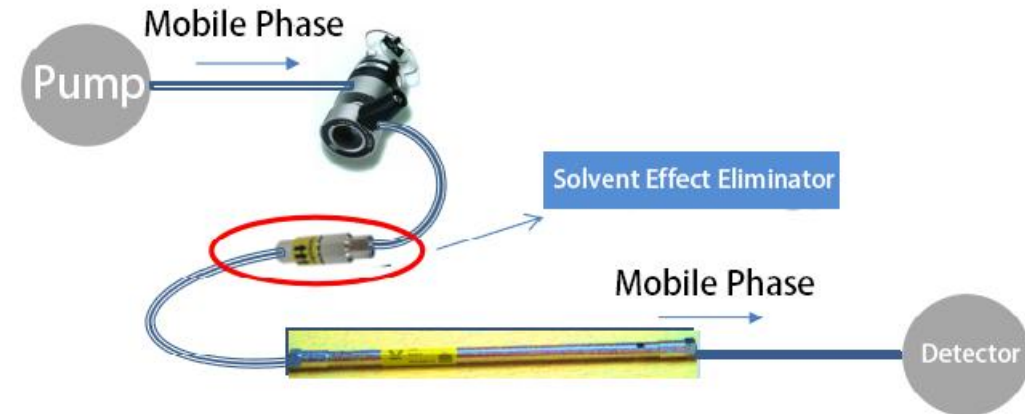


The background features a central cluster of overlapping, semi-transparent squares in various shades of blue, green, and grey. Three small inset images are placed within this cluster: a laboratory flask with blue liquid and a molecular model at the top, a colorful crystalline structure at the bottom left, and a chromatogram plot at the bottom right.

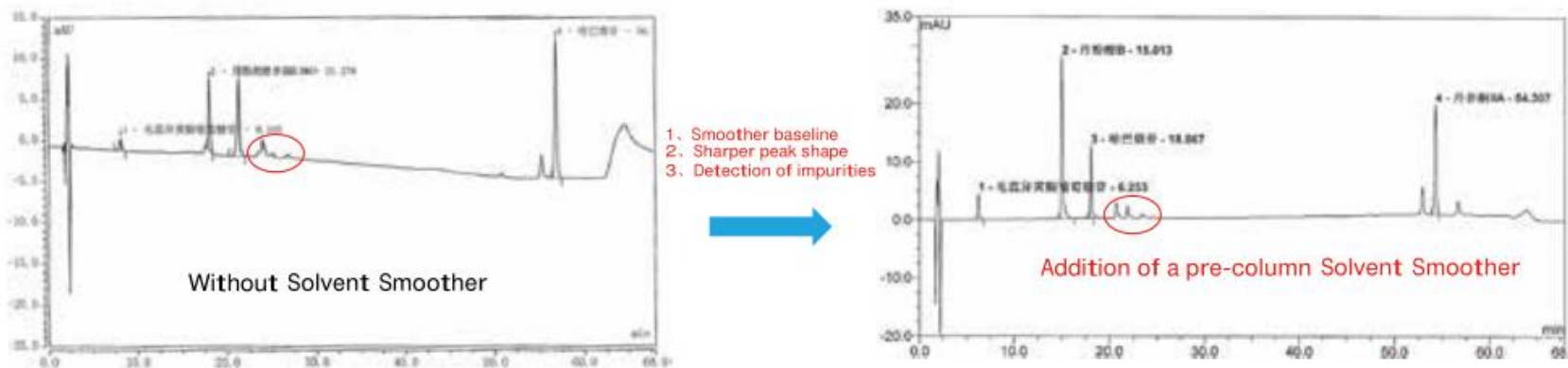
Anavo® Solvent Effect Eliminator

Principle of Solvent Effect Eliminator:

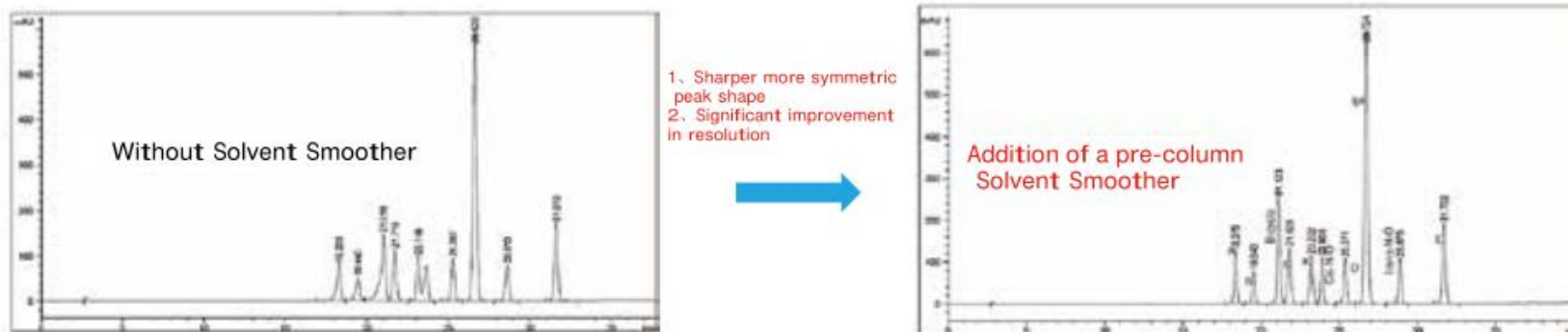
The solvent effect primarily occurs during the sample injection process. Due to the poor compatibility between the sample solvent and the mobile phase, the sample solvent disturbs the concentration distribution of the sample molecules before they undergo the proper chromatographic retention behavior in the column. Although this disturbance lasts for a short time, the high concentration of the sample at this point means that even a slight disturbance can significantly affect the concentration distribution of the sample molecules within the chromatographic column.



Analysis of Danshen Preparations



Related Substance Analysis of Risperidone



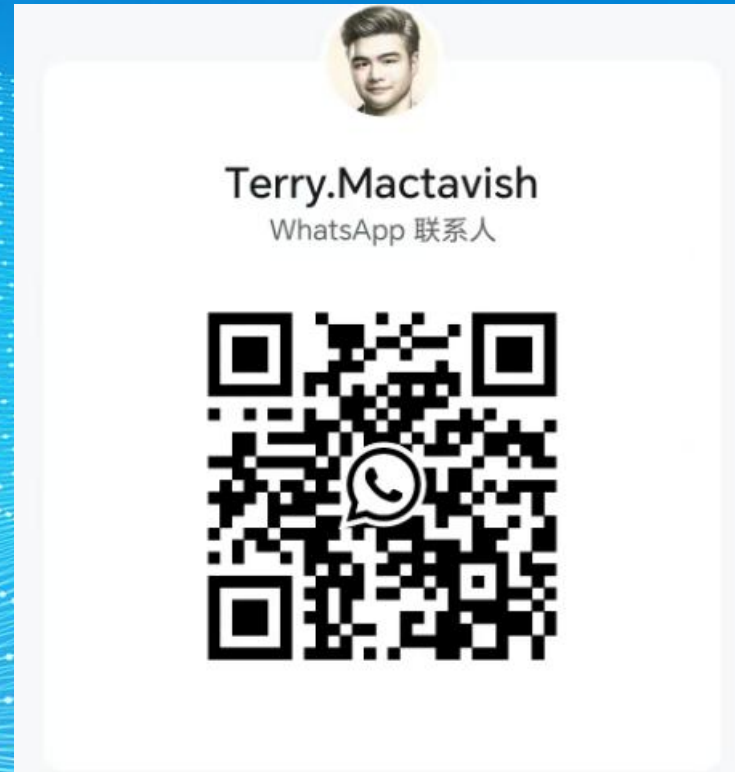
Solvent Effect Eliminator Performance and Advantages :

- Significantly improve peak shape and enhance column efficiency.
- Achieve a more stable chromatographic baseline and more consistent peak retention times.
- Increase resolution and impurity detection capabilities.
- Minimize differences between sample solvents and mobile phases, reducing chromatographic analysis issues.

Product information:

Description	Parameter	Application	Art. Code
Anavo Solvent-Smoother Solvs-AB,1/PK	20 μ L, Max 5500 psi	HPLC	AN80C036
Anavo Solvent-Smoother Solvs-UP3,1/PK	10 μ L, Max 15000 psi	UHPLC	AN80C068
Anavo Solvent-Smoother Solvs-X,1/PK	20 μ L, Max 15000 psi	HPLC/UPLC	AN80C049
Anavo Solvent-Smoother Solvs-Peek,1/PK	20 μ L, Max 4500 psi	HPIC	AN80C067

Contact Us



Phone: +86 188 2709 1392

Email: chemicals_trading@126.com

Address: Rm 305, Building
Tengjundebiyuan,

No.1658 Gumei Road, Xuhui
District, Shanghai

www.scichrolab.com