





Sample Bottle

# Sample Bottle and Cap

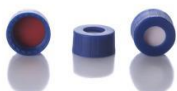
8-425 Thread Neck, 2ml Vial Specifications: 11.6\*32mm, Neck Diameter 8mm, Inner Diameter 5mm

Item No	Description	Specifications (Box)	
LR-SV8132	2ml Transparent Screw Thread Sample Vial	100	
LR-SV8232	2ml Transparent Screw Thread with Graduations	100	
LR-SV8332	2ml Brown Screw Thread Sample Vial	100	
LR-SV8432	2ml Brown Screw Thread with Graduations	100	
LR-D8001	8*1.5mm Red PTFE/White Silicone	100	
LR-D8002	8*1.5mm White PTFE/Red Silicone	100	
LR-GD8001	Black Pierced Cap, Red PTFE/White Silicone Insert	100	
LR-GD8002	Black Pierced Cap, White PTFE/Red Silicone Insert	100	
LR-GD8007	Black Solid Cap, Red PTFE/White Silicone Insert	100	
LR-GD8008	Black Solid Cap, Red PTFE/White Silicone Insert	100	
LR-GT5250	250µl Glass Flat Bottom Insert	100	
LR-GT5200	200µl Glass Conical Bottom Insert	100	
LR-GT5150	150µl Glass Conical Bottom Insert with Holder	100	
LR-SV001	1ml Transparent Sample Vial with Pre-installed PE Snap Cap	100	
LR-SV002	1ml Brown Sample Vial with Pre-installed PE Snap Cap	100	



**9-425 Short Thread 2ml Vial Specifications: 11.632mm, Neck 9mm, Inner Neck 6mm**

Item No	Description	Specifications (Box)
LR-SV9132	2ml Transparent Screw Thread Vial	100
LR-SV9232	2ml Transparent Screw Thread Vial with Graduation	100
LR-SV9332	2ml Brown Screw Thread Vial	100
LR-SV9432	2ml Brown Screw Thread Vial with Graduation	100
LR-D9001	9*1mm Red PTFE/White Silicone Septa	100
LR-D9002	9*1mm White PTFE/Red Silicone Septa	100
LR-D9004	Cut Septa Red PTFE/White Silicone	100
LR-GD9001	Blue Open-Top Cap with Red PTFE/White Silicone Septa	100
LR-GD9002	Blue Open-Top Cap with White PTFE/Red Silicone Septa	100
LR-GD9004	Blue Open-Top Cap with Cut Red PTFE/White Silicone Septa	100
LR-GD9005	Blue Open-Top Cap with Cut White PTFE/Red Silicone Septa	100
LR-GD9007	Blue Solid Cap with Red PTFE/White Silicone Septa	100
LR-GD9008	Black Solid Cap with Red PTFE/White Silicone Septa	100
Note: Custom colors and specifications of PP (Polypropylene) Screw Caps are available.		
LR-GT6300	300ul Flat Bottom Glass Insert	100
LR-GT6250	250ul Sharp Bottom Glass Insert	100
LR-GT6200	200ul Glass Sharp Bottom Insert with Holder	100
LR-GTS6250	250ul Plastic Round Bottom Insert	1000
LR-GTS6200	200ul Plastic Sharp Bottom Insert with Holder	200



### Fusion Vial, Plastic Sample Vial, High-Recovery Vial

Item No	Description	Specifications (Box)
LR-GTF6250A	250µL Transparent Glass Insert Fusion Vial	100
LR-GTF6250B	250µL Brown Glass Insert Fusion Vial	100
LR-SVA9132-300	300µL Transparent Plastic Micro Vial	100
LR-SVB9132-300	300µL Brown Plastic Micro Vial	100
LR-SVS9232	2mL Transparent Plastic Graduated Sample Vial	100
LR-SV9132-03	30µL Glass Bottom Micro Fusion Vial, High Recovery	100



### Screw Neck Sample Vial

#### 11mm Screw Neck 2ml Sample Vial

Item No	Description	Specifications (Box/Pack)
LR-SV11132	2ml Screw Neck Transparent Sample Vial	100
LR-SV11232	2ml Screw Neck Transparent Graduated Sample Vial	100
LR-SV11332	2ml Screw Neck Brown Sample Vial	100
LR-SV11432	2ml Screw Neck Brown Graduated Sample Vial	100
LR-D1101	with Red PTFE/White Silicone Septa	100
LR-D1102	White PTFE/Red Silicone Septa	100
LR-G1101	Silver-Opening Aluminum Cap with Central Hole (5.5mm)	100
LR-GD1101	Aluminum Cap with Red PTFE/White Silicone Septa	100
LR-GD1102	Aluminum Cap with White PTFE/Red Silicone Septa	100



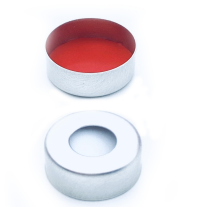
## 11mm Cap 2ml Sample Vial

Item No	Description	Specifications (Box/Pack)
LR-SVK11132	2ml Cap Transparent Sample Vial	100
LR-SVK11232	2ml Cap Transparent Graduated Sample Vial	100
LR-SVK11332	2ml Cap Brown Sample Vial	100
LR-SVK11432	2ml Cap Brown Graduated Sample Vial	100
LR-D1101	Red PTFE/White Silicone Liner	100
LR-D1102	White PTFE/Red Silicone Liner	100
LR-GDS1101	Plastic Neck Cap, Red PTFE/White Silicone Seal	100
LR-GDS1102	Plastic Neck Cap, White PTFE/Red Silicone Seal	100



## Compatible 11mm Cap Remover and Crimper

Item No	Description	Specifications (Box)
LR-YGQ11	11mm Neck Bottle Crimper	Box
LR-QGQ11	11mm Neck Bottle Opener	Box



8ml, 16.660mm, diameter 13mm

12ml, 18.566mm, diameter 15mm



Item No	Description	Specifications (Box)
LR-SV1360A	8ml Transparent Screw Thread Sample Vial	100
LR-SV1360B	8ml Brown Screw Thread Sample Vial	100
LR-SV1566A	12ml Transparent Screw Thread Sample Vial	100
LR-SV1566B	12ml Brown Screw Thread Sample Vial	100
LR-GD1501	Black Open Hole Cap with PTFE Liner	100
LR-GD1501	Black Open Hole Cap with PTFE Liner	100
LR-GD1302	Black Open Hole Cap with PTFE Liner	100
LR-GD1305	Black Open Hole Cap with PTFE Liner	100
LR-D1302	12.5mm Red PTFE/White Silicone Liner	100
LR-D1501	14mm Blue PTFE/White Silicone Liner	100



## 18-400 Standard Threaded 10ml/15ml Sample Vial







Item No	Description	Specifications (Box)
LR-SV1850A	10ml Transparent Screw Thread Sample Vial 22*50mm	100
LR-SV1850B	10ml Brown Screw Thread Sample Vial 22*50mm	100
LR-SV1870A	15ml Transparent Screw Thread Sample Vial 22*70mm	100
LR-SV1870B	15ml Brown Screw Thread Sample Vial 22*70mm	100
LR-GDS1801	Black Open Hole Cap with PTFE Liner	100
LR-GDS1803	Black Flat Cap with PTFE Liner	100
LR-DS1801	17.5mm Blue PTFE/White Silicone Liner	100



## 24-400 Standard Threaded Vials 20ml, 30ml, 40ml, 60ml EPA/POG Sample Vials

\* Made from Class I hydrolytic glass, ultra-clean packaging, suitable for sample storage and POG

testing. Compatible with the following instruments: Agilent, Dionex, Shimadzu, Tekmar, Parian, etc.

Item No	Description	Specifications (Box)	
LR-SV2257A	20ml Clear Screw-Thread Vial	100	
LR-SV2257B	20ml Amber Screw-Thread Vial	100	
LR-SV2275A	30ml Clear Screw-Thread Vial	100	
LR-SV2275B	30ml Amber Screw-Thread Vial	100	
LR-SV2295A	40ml Clear Screw-Thread Vial	100	
LR-SV2295B	40ml Amber Screw-Thread Vial	100	
LR-SV22122A	50ml Clear Screw-Thread Vial	100	
LR-SV22122B	50ml Amber Screw-Thread Vial	100	
LR-SV22144A	60ml Clear Screw-Thread Vial	100	
LR-SV22144B	60ml Amber Screw-Thread Vial	100	
LR-GD2401	Black Solid Cap with PTFE Liner	100	
LR-GD2402	White Solid Cap with PTFE Liner	100	
LR-GD2403	Black Open Hole Cap with PTFE Liner	100	
LR-GD2404	White Open Hole Cap with PTFE Liner	100	
LR-D2201	Natural PTFE/Natural Silicone Septa 3mm	100	
LR-D2203	Natural PTFE/Natural Silicone Septa 1.5mm	100	

Solid Cap Washer 22x1.5mm

Open Cap Washer 22x3mm

# Headspace Sampling Vial

## 20mm crimp top headspace vials, anaerobic bottles

\* Made of class A hydrolytic glass, with excellent thermal shock resistance, strict wall thickness control to ensure safety under high pressure. The angled crimp top design provides a larger contact area between the crimp and the septum, ensuring better sealing. Available in both round and flat bottom options, suitable for different heating modules.

Item No	Description	Specifications (Box)
LR-PV2038	6ml Flat Bottom Headspace Bottle (Swiss Viro)	100
LR-PV2038Y	6ml Round Bottom Headspace Bottle (Swiss Viro)	100
LR-PV2046A	10ml Flat Bottom Transparent Headspace Bottle	100
LR-PV2046B	10ml Flat Bottom Brown Headspace Bottle	100
LR-PV2075A	20ml Flat Bottom Transparent Headspace Bottle	100
LR-PV2075B	20ml Flat Bottom Brown Headspace Bottle	100
LR-PV2075Y	20ml Round Bottom Transparent Headspace Bottle	100
LR-PV2050ML	50ml Transparent Molded Bottle Anaerobic Bottle	1
LR-PV20100ML	100ml Transparent Molded Bottle Anaerobic Bottle	1
LR-PV20150ML	150ml Transparent Borosilicate Anaerobic Bottle	1
LR-PV20250ML	250ml Transparent Borosilicate Anaerobic Bottle	1
LR-PV20500ML	500ml Transparent Borosilicate Anaerobic Bottle	1
LR-YGQ20	20mm Aluminum Cap Pressing Tool	1
LR-QGQ20	20mm Aluminum Cap Lifter	1



**Custom 11 13 15 20 26 28 30 32mm Aluminum Cap/Aluminum-Plastic Cap Pressing Tool Lifter**



## 20mm Crimp Top Vial Closure and Liner

\* Includes safety aluminum cap, traditional aluminum cap, and magnetic aluminum cap, suitable for various sample injectors. Also offers colored aluminum caps for easy sample color management.

Item No	Description	Specifications (Pack)
LR-G2001	20mm Silver Hole-Punched Aluminum Cap	100
LR-D2001	20*3mm White PTFE/White Silicone Liner	100
LR-D2002	20*3mm White PTFE/Blue Silicone Liner	100
LR-D2003	20*3mm Natural PTFE/White Silicone Liner	100
LR-D2010	20mm Butyl-Coated Rubber Stopper	100
LR-GD2001	Silver Hole-Punched Aluminum Cap with White Film and White Rubber Liner	100
LR-GD2002	Silver Hole-Punched Aluminum Cap with White Film and Blue Rubber Liner	100
LR-GD2003	Silver Hole-Punched Aluminum Cap with Natural Film and White Rubber Liner	100
LR-GD2002C	Magnetic Metal Aluminum Cap with PTFE/Silicone Composite Liner	100
LR-JS20	20MM Blue Butyl Rubber Stopper	100
LR-GDA2010	Silver Safety Aluminum Cap with PTFE/Butyl Composite Liner	100
LR-DD2010	20*3mm PTFE/Butyl Composite Molded Liner	100
LR-FB2001	20*3MM Explosion-Proof Silicone Liner	100



## 18mm Precision Thread Headspace Vial

\* Made from Type I hydrolytic glass, with a round bottom design for enhanced pressure resistance. No crimping tool required, making it convenient for on-site sampling.

Item No	Description	Specifications (Box)
LR-PV1846A	10ml Transparent Precision Thread Round Bottom Headspace Vial	100
LR-PV1846B	10ml Brown Precision Thread Round Bottom Headspace Vial	100
LR-PV1875A	20ml Transparent Precision Thread Round Bottom Headspace Vial	100
LR-PV1875B	20ml Brown Precision Thread Round Bottom Headspace Vial	100
LR-PV1875AS	20ml Transparent Precision Thread Headspace Vial with Writeable Area	100

## 18mm Precision Thread Headspace Vial with Matching Caps and Septa

\* The septa is thinner than the neck, allowing for easy piercing. The magnetic metal cap is compatible with most autosamplers, especially suited for GTG GombiPAL and Shimadzu AOG2000 autosamplers.

Item No	Description	Specifications (Pack)
LR-D1801	Blue PTFE/White Silicone Septa 17.51.5mm	100
LR-D1802	Green PTFE/White Silicone Septa 17.31.3mm	100
LR-D1803	Blue PTFE/White Silicone Septa 17.5*3mm	100
LR-G1801	Silver Magnetic Headspace Cap with 8mm Center Hole	100
LR-GD1801	Silver Magnetic Headspace Cap with Blue PTFE/White Silicone Septa	100



## DPME Dedicated Sample Vials and Caps

\* Sample vials for manual DPME injection, featuring ultra-low loss septa suitable for direct DPME puncture. The silicone layer offers reduced loss, minimizing interference with experimental results, while the PTFE layer is half as thick as standard septa, reducing puncture resistance and better protecting the extraction head.

Standard threaded vials for automatic DPME

13-425 standard thread, 4ml sample vials and septa

Item No	Description	Specifications (Box)
LR-SV13145	4ml transparent threaded vial, 14.7*45mm	100
LR-SV13245	4ml transparent threaded vial with writing scale	100
LR-SV13345	4ml brown threaded vial, 14.7*45mm	100
LR-SV13445	4ml brown threaded vial with writing scale	100
LR-D1301	12*1.5mm red PTFE/white silicone septa	100
LR-GD1301	Black threaded cap with hole; red PTFE/white silicone septa	100
LR-GD1305	Black solid threaded cap; red PTFE/white silicone septa	100



## Glass Bottles

Transparent Blue-Capped Bottles / Mobile Phase Solvent Bottles / Refill Bottles / Fermentation Bottles / Storage Bottles

\* Made of first-grade borosilicate glass with consistent glass composition, uniform wall thickness standards, precise dimensions, and strictly controlled tolerances. Water-resistant composite IDO719 (first-grade), acid-resistant according to DIN12 116 (first-grade), alkali-resistant according to IDO695 (second-grade). Preferred choice for laboratory reagent storage, especially for molecular biology experiments. Autoclavable at 121°C with lid and sealing ring to prevent solvent evaporation and leakage.



Item Number	Capacity (ml)	Neck Type GL	Specifications (Units)
LR-LG50	50	GL32	each
LR-LG100	100	GL45	each
LR-LG250	250	GL45	each
LR-LG500	500	GL45	each
LR-LG1000	1000	GL45	each
LR-LG2000	2000	GL45	each
LR-LG5000	5000	GL45	each
LR-LG10000	10000	GL45	each
LR-LG20000	20000	GL45	each
LR-GL14	GL14 Reagent Bottle Cap PBT		each
LR-GLA14	GL14 Reagent Bottle Cap with Hole PBT		each
LR-GL25	GL25 Reagent Bottle Cap PBT		each
LR-GLA25	GL25 Reagent Bottle Cap with Hole PBT		each
LR-GL32	GL32 Reagent Bottle Cap PBT		each





# High-Quality Headspace Vials

\*Capable of withstanding an internal pressure of up to 0.45 MPa, the headspace vial, cap, and sealing gasket are sterilized at 200°C. The vial features graduated markings to ensure quality assurance.

\*Equipped with a silicone gasket or a Teflon-silicone composite gasket, the Teflon-silicone gasket is coated with a polytetrafluoroethylene film on the silicone surface, offering high-temperature resistance, low leakage, and puncture resistance, ensuring no secondary contamination of samples during high-temperature applications.

\*Teflon-silicone composite gaskets are recommended!



Model : XL250-C1  
 Nominal Capacity : 8 OZ  
 Full Capacity : 255ml  
 Bottle Height : 138mm  
 Neck Inner Diameter : 17mm  
 Bottle Diameter : 60.5mm



Model : XL500-C1  
 Nominal Capacity : 16OZ  
 Full Capacity : 510ml  
 Bottle Height : 170.5mm  
 Neck Inner Diameter : 17mm  
 Bottle Diameter : 75mm



## Detail display

Smooth spiral bottle neck / Thickened soda-lime glass body / Anti-slip bottle bottom / Non-toxic and healthy

Spiral bottle neck

① Smooth neck  
 Fits tightly with the cap for a better seal.



## Sample Bottle Racks

The sample bottle racks are made of PP plastic and are suitable for 2mL and 4mL sample bottles.

Item Number	Description	Specifications (per unit)
LR-P12-50	2mL Sample Bottle Rack, 50 holes, Blue	1
LR-P15-50	4mL Sample Bottle Rack, 50 holes, Blue	1
LR-H12-100	2mL Sample Bottle Box, 100 holes	1
LR-H15-36	4mL Sample Bottle Box, 36 holes	1

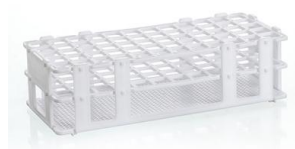


The sample bottle racks are made of PP plastic and are suitable for sample bottles ranging from 4mL to 60mL.

Item Number	Description	Specifications (per unit)
LR-P16-60	4mL Sample Bottle Rack, 60 holes	1
LR-P20-40	15-425 Sample Bottle Rack, 40 holes	1
LR-P25-24	Gas Chromatography Headspace Bottle Rack, 24 holes	1
LR-P30-21	20-60mL EPA Sample Bottle Rack, 21 holes	1



Number of holes: 60 Holes  
Side length: 16 mm  
248\*105\*65 mm



Number of holes: 90 Holes  
Side length: 13 mm  
248\*105\*64 mm

The sample bottle racks are made of acrylic, a durable and corrosion-resistant material.

Item Number	Description	Specifications (per unit)
LR-B12-50	2mL Sample Bottle Rack, 50 holes	1
LR-B15-50	4mL Sample Bottle Rack, 50 holes	1
LR-B22-40	Headspace Bottle Rack, 40 holes	1
LR-B30-20	20-60mL Sample Bottle Rack, 20 holes	1



Number of holes: 24 Holes  
Side length: 25 mm  
248\*105\*65 mm



# Gas Sample Injection Mats

Description	Specifications (Pack)
T-Type Injection Mat	1
113mm Red Guide Hole Injection Mat	1
93mm Red Guide Hole Injection Mat	1
9.53.5mm North-Ben Rui Li Injection Mat	1
11.53.5mm North-Ben Rui Li Injection Mat	1



## COD Digestion Tube

10ml Flat Bottom Test Tube 16*100mm	1
10ml Round Bottom Test Tube 16*100mm	1
15-415 Test Tube Cap, Double-sided PTFE Mat	1
Boxed (additional charge)	



## Soil Bottles

100ml Brown Threaded Soil Collection Bottle	each
250ml Brown Threaded Soil Collection Bottle	each
500ml Brown Threaded Soil Collection Bottle	each
1000ml Brown Threaded Soil Collection Bottle	each







Phone: +86 188 2709 1392  
Email:chemicals\_trading@126.com  
Address: Rm 305, Building Tengjundebiyiyuan,  
No.1658 Gumei Road,Xuhui District,Shanghai